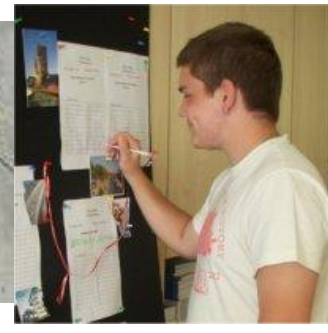




German Summer Camps

Teenager Programmes 2012



Location	Ages	Lessons	Months courses are offered
Berlin/Villa	16/17 yrs	20 x 45	June, July & August
Berlin/City	16/20 yrs	20 x 45	June, July & August
Lindau	13/16 yrs	20 x 45	June, July & August

These programmes are ideal for those looking to revise their German previously studied in the UK.

Emphasis is placed on oral skills and developing higher levels of confidence. Previous **German & Fun** students have enjoyed the chance to practise their German and loved the social environment with its international mix of students.

The courses are very popular and are likely to be fully booked during the July/August period.

Each college offers an individual study environment in which students can follow a German course with other students of their own age, who are at similar level of German ability. In addition each college offers a range of social activities to provide contrast and bring an additional element of fun to the programme. The colleges are aware that the students are on holiday and none of these programmes aim to be crammer environments.

Students are immersed in German culture, speaking German with native German speaking teachers and the monitors (who help organise the social activities each week) and are sharing their time with international students who have all come to learn German and enjoy the German lifestyle.

Berlin (Summer Villa): 16/17 yrs



Berlin is a dynamic, fast developing capital city with endless



sights to see and things to do. A great city destination for summer courses, with wonderful parks to explore and plenty of sunshine.

The Summer Villa course is housed in a charming villa, built around the turn of the last century, in the old Western sector, very centrally located, near Kurfuerstendamm. It offers seven spacious classrooms, a lounge, a cafeteria and a garden for relaxing after classes. It caters for a max. of 40 students a week and the school staff live on site. There are 10+ (3 & 4 bedded) rooms in the residence. Each room has a washbasin and there are showers and toilets on each corridor. Bed linen is provided and changed once a week. Towels can be provided but may not be used for swimming, so please bring your own.

Meals: Full-board accommodation is included in the course fees. All meals are taken at the villa. There are no phones in the rooms, however students have access to a public phone.

German Programme

Two, three or four week programmes

- 20 group lessons
- Level test on Sunday early evening on site
- Up to 12 students per class level
- 45 minutes per lesson
- Lessons : Monday to Friday
- 4 Levels : Beginners, Elementary, Intermediate, Advanced
- 2 activities per day + one full day excursion each Saturday

In total there are 40 lessons over 2 weeks (unless a day is lost to a public holiday). This is equal to a term of contact lessons at your school in the UK. Small classes, native speakers, interesting material and a pleasant learning atmosphere all contribute to the learning process. The emphasis is on the active use of language in real situations.

Excursions:

A range of activities are offered as an inclusive part of this programme including: 1) two planned activities per day e.g. Berlin Wall, Checkpoint Charlie, rowing in Tiergarten Park, New Reichstag, Potsdamer Platz, a night out, barbecues, bowling, dancing or a cinema trip, 2) one excursion per week i.e. Potsdam, Pfaueninsel, Sachsenhausen Island, and 3) On-campus activities based on music, games and sports, and creative activities such as making a newspaper or staging a play.

Going Out Permission: See end of fact sheet for details.

Accommodation:

The college offers full-board residential accommodation, with staff on site (24hrs a day) providing a self contained German & Fun centre in central Berlin. Students attend their classes and live on site.

Travel directions:

Arrive: Sunday Depart: Sunday a.m.

Fly to Berlin and take the inclusive return transfer service from one of Berlin's airports, the Hauptbahnhof or main bus station. Students should be in Berlin, at their accommodation, by 17.00hrs for the introductory talk.



Berlin Villa Start Dates 2012:

25 Jun, 02 July, 09 July, 16 July, 23 July, 30 July
All levels accepted on all start dates.

NB: College closes on 12 August, therefore 30 July course is only of 2 weeks duration

Berlin Villa Prices: 2012

German Programme
 Tuition & Residential accommodation Shared room (3/5 bedded rooms)

Two weeks: €1280.00

Three weeks: €1930.00

Four weeks: €2580.00

Fees include: Tuition and accommodation for length of course booked, return transfer from one of the Berlin airports on Sundays at agreed times only, social activities described as inclusive in course fees.

CESA administration fee: €45.00 is added per student enrolling on each programme.
 Single room supplements: Not applicable to this programme.

Additional costs / Public transport : € 50 - 75.00 per week Transfer (if not on set Sundays) : € 80.00



Berlin (City): 16/20 yrs



The Summer City Campus course is offered in the main college campus, along with a range of adult language programmes. The City course students can either live on site, in a hostel a few minutes' walk away or with German host families. The college offers great on site campus facilities including 40 spacious classrooms, a book store, a restaurant and cafeteria and a private garden for relaxing after classes. It is well located in Berlin (in the old Eastern Section) and the on site accommodation is very popular and will become fully booked in the summer months (so a supplement will be applied for those who wish to live on site). Each room is a self contained studio apartment, shared with other teenage language students (3 to 5 students per apartment). Bed linen is provided and changed once a week. Towels can be provided but may not be used for swimming, so please bring your own. The hostel, just a few minutes away offers the same bedroom arrangement (3 to 4 students per apartment). With hosts, students are in shared rooms (2 students per room) and should expect a 30/50 mins commute to school each day.

Meals: Half-board accommodation is included in the course fees. On campus and hostel students take breakfast, where they are living, and the evening meal on campus. Lunches can also be bought on site. Students staying with hosts, take breakfast with their families, but the evening meal is on campus.

Standard Programme

Two, three or four week programmes

- 20 group lessons
- Up to 12 students per class level
- 45 minutes per lesson
- Level test and induction talk at 5pm on Sunday evening of arrival
- 4 levels : Beginners, Elementary, Intermediate, Advanced
- 2 social activities each day + 1 full day excursion's each Saturday

In total there are 40 lessons over 2 weeks (unless a day is lost to a public holiday). This is equal to a term of contact lessons at your school in the UK. Small classes, native speakers, interesting material and a pleasant learning atmosphere all contribute to the learning process. The emphasis is on the active use of language in real situations.

Excursions:

A range of activities are offered as an inclusive part of this programme including: 1) two planned activities per day e.g. Berlin Wall, Checkpoint Charlie, rowing in Tiergarten Park, New Reichstag, Potsdamer Platz, a night out, barbecues, bowling, dancing or a cinema trip, 2) one excursion per week i.e. Potsdam, Pfaueninsel, Sachsenhausen Island, and 3) On-campus activities based on music, games and sports, and creative activities such as making a newspaper or staging a play.

Going Out Permission for teenagers: See end of fact sheet for details.

Accommodation:

The college offers residential accommodation (on site – at a supplement & at a nearby hostel) and host accommodation in Berlin (30/50 mins commuting involved), providing a more German & Fun programme in central Berlin that's perfect for more mature, more independently minded teenage students.



Travel directions:

Arrive: Sunday Depart: Sunday a.m.

Fly to Berlin and take the inclusive return transfer service from one of Berlin's airports, the Hauptbahnhof or main bus station. Students should be in Berlin, at their accommodation, by 17.00hrs for the introductory talk and level test.

Berlin City Start Dates 2012:

25 Jun, 02 July, 09 July, 16 July, 23 July, 30 Jul, 06 Aug
All levels accepted on all start dates.

NB: College closes on 19 August, therefore 06 August course is only of 2 weeks duration



Berlin City Prices: 2012

Standard Programme
Tuition & Residential/Host accommodation Shared room

Two weeks: €1210.00

Three weeks: €1810.00

Four weeks: €2410.00

Fees include: Tuition and accommodation for length of course booked, return transfer from one of the Berlin airports on Sundays at agreed times only, social activities described as inclusive in course fees.

CESA administration fee: €45.00 is added per student enrolling on each programme.

Single room supplements: Not applicable to this programme.

On campus room supplement : € 70.00 per week

Public transport : € 50-75.00 per week

Entrance fees : € 30.00 per week

Lunches can be bought on site : € 49.00 per week



Lindau:

13/16 yrs



Situated along the shore line and on a small island in Lake Constance, in Southern Germany, Lindau is a picturesque location, with small streets, mediaeval buildings and fabulous lake and mountain views. It is within easy reach by air from Friedrichshafen, Zurich or Munich and has great appeal to our younger students.

Lessons are held in the main school, which is situated on Lindau island. The school has modern classrooms, a café with a terrace, a library, a media library with internet and email access. The college will also be offering language courses to adult students aged 16+ yrs throughout the summer, on the same site.

Standard Programme

- Two, three or four week programmes
- 20 group lesson pr wk format (x 45 mins lesson)
- Up to 14 students per class level
- Timetabled: 08.50 to 12.20hrs
- No lessons on the first Monday

Elementary/Intermediate levels - **No beginners**



In total there are 36 lessons over 2 weeks (unless a day is lost to a public holiday). This is equal to a term of contact lessons at your school in the UK.

All students on this course **MUST** have studied German for at least one year. The goal is to improve the practical use of the language. Theory and grammar are taught, but is kept to what is necessary and meaningful. Points of grammar will be illustrated in practical contexts and real situations wherever possible.



Excursions:

A range of activities are offered (accompanied/supervised by the monitors) as an inclusive part of this programme including 1/ a daily social programme – various sporting activities, a lake side barbecue, local bike or boat trips and welcome and farewell parties 2/ a two day trip to Munich with the monitors, when students see the Olympic Park, the historic centre of the city and the Bavarian Film Studios 3/ a half day trip each week and one full day trip every other weekend to places such as Mainau, the island of flowers, Meersburg, with the oldest castle in Germany or the Alps for summer sledding.

Going Out Permission for teenagers: See end of fact sheet for details.

Accommodation:

The college offers a host based German & Fun programme in Lindau so that students can attend their classes and live with local hosts in Lindau.

Hosts: The college chooses the hosts carefully and many of them have worked with the college for several years. They offer full board and students share a room with one other student. Students are either a short bus ride or walking distance from the college, some borrow bikes for the duration of their stay (maximum 20 mins from the college). Please note that hosts are not available on the island itself.

Travel directions:

Arrive: Sunday **Depart:** Saturday a.m.

Fly to Friedrichshafen (or Zurich or Munich) and we recommend you book the arrival transfer service from the relevant airport. On departure you can book a second transfer or the college staff or hosts will assist students to purchase a train ticket from Lindau station to the airport and see them on to the train at Lindau at no extra cost. There are normally several students departing together. Once you arrive at the airport you come up the escalators to reach the “check in “ area.

Lindau Start Dates 2012:

25 June, 02 July, 09 July, 16 July, 23 July, 30 July
No beginners accepted on any start dates

NB: The college closes the German & Fun courses on 11 August 2012

2012 Lindau Programme prices:

Standard Programme
Tuition & host based accommodation Shared room

Two weeks €1260.00	Three weeks €1890.00	Four weeks €2520.00
--------------------	----------------------	---------------------

Fees include: Tuition and accommodation for length of course booked and social activities described as inclusive in course fees.

CESA administration fee: €45.00 is added per student enrolling on each programme.

Single room supplements: Not applicable to this programme.

Transfer costs: Friedrichshafen – one way €40 per person Zurich – one way €115 per person

Stuttgart or Munich – one way €150 per person Memmingen – one way € 70.00 per person

Lindau island : surrounded by Lake Constance. Perfect for BBQ's!





UK Tel: 01209 211 800
Int'l Tel: +44 1209 211 800



CESA
Languages
Abroad

Going Out Permission:

Berlin

City programme :

Teenagers aged 16/18 years are not allowed out beyond 12.00midnight on their own but this can be extended at the weekend, but no restrictions are applied to older students.

Parents must be aware that some of the college arranged activities in the evenings will go on later than 12.00midnight. Students need to be mature about their behaviour.

Any inappropriate behaviour will be reported to the parents concerned.

Villa programme :

Teenagers aged 16/17 years old are not allowed out after 22.00hrs on this course unless accompanied by group leaders. If you want greater freedom, please consider the City programme.

NB: Going out in Berlin on the Villa programme - the college group leaders will accompany you and show you many of the sights of Berlin. Some weekends the students may be out until gone midnight with the leaders.

Parents will be asked to indicate whether or not their child is allowed to go swimming, cycling, horse riding, sailing or hiking with a college leader or qualified trainer (depending on the activity). Additional authorisation is requested as to whether or not the child is allowed to separate from the group during excursions in Berlin or whether or not the child is allowed to attend the teenager disco with other college students. Any additional criteria that the college may add over the forthcoming months will be indicated in the Briefing Pack, once booked on to the programme or in a letter prior to course commencement.

Lindau

For 13/16 year olds.

The college insists that students respect the following curfews: students aged up to and including 15yrs must be home by 22.00hrs. Students aged 16 or 17 yrs old must be home at 11pm.

Stricter rules can be agreed to, more lenient rules cannot.

Parents are asked to confirm their agreement to this arrangement and to ensure their child understands and agrees to abide by the curfew.

Any additional criteria that the college may add over the forthcoming months will be indicated in the Briefing Pack, once booked on to the programme or in a letter prior to course commencement.

Administration

All previous costs relate to College fees. In all cases CESA makes an administration charge of €45.00 per booking which will be shown in addition on your invoice.

Course Enrolment

On receipt of your form we will enrol you on the course and send confirmation of your booking, an invoice, a college brochure and a Briefing Pack. The pack will offer much useful advice and will answer many of your and your parents' questions. It also includes several forms for parents/guardians to complete regarding travel, medical emergencies, going-out permission etc.

These forms **must** be returned to us *before you leave for Germany*.

The colleges requests that students enrol no later than THREE weeks before the beginning of the course.

To enrol on this course please complete the enrolment form provided in the main CESA brochure and send it, with a deposit of €200.00 (GBP 150.00) to:-

If you have any questions that have not been answered by this fact sheet, please do not hesitate to phone or email us.

CESA Languages Abroad

CESA House, Pennance Road Lanner Cornwall TR16 5TQ

Tel: 01209 211800 e mail: info@cesalanguages.com